



# LIVING now

Forever an icon,  
today Smart as well.

#legrandImprovingLives

**bticino**

A brand of  legrand®

# Design innovation

Perfect planarity and elegant details



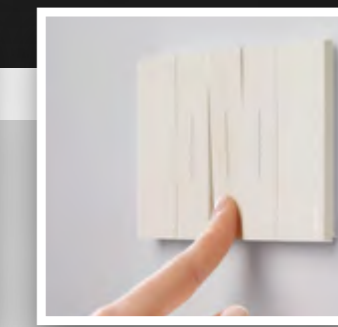
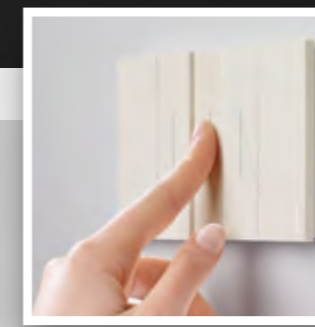
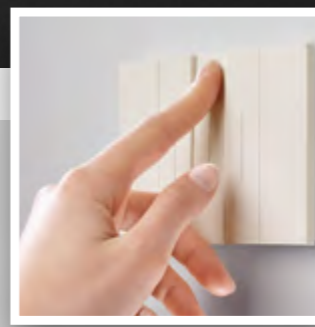
One single shape with increased space for the functions



Living Now, has won this prestigious international award confirming BTicino's ability to combine technology and design

## Full touch controls

The light can be switched on or off by pressing any point of the surface of the keys. After being pressed, the keys return to their original position, perfectly aligned.



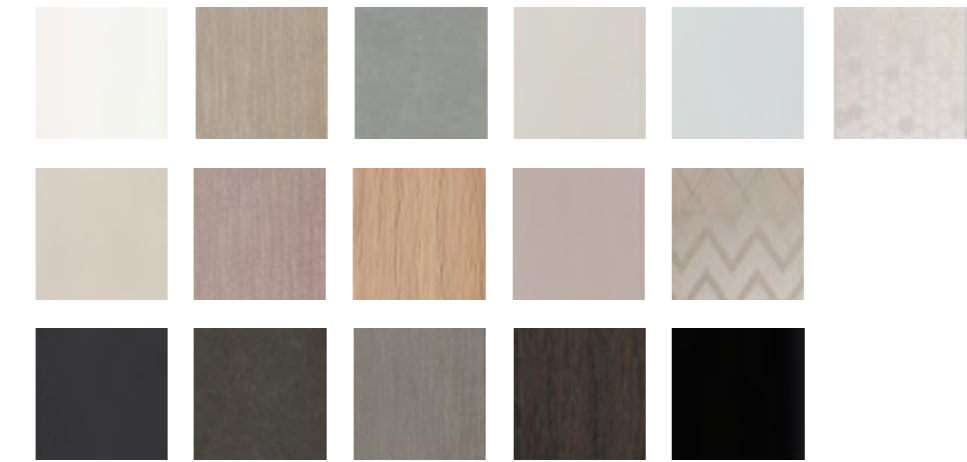


### 3 COLOURS FOR THE DEVICES

The devices feature an aesthetic component, the covers, available in three different colours: white, sand and black. Satin finish surface: for a pleasant feel.

### COMBINATION WITH THE COVER PLATES

The Living Now cover plate range includes 16 finishes, purposely selected for use with the device covers, and made of different materials: techno polymer, metal and wood.

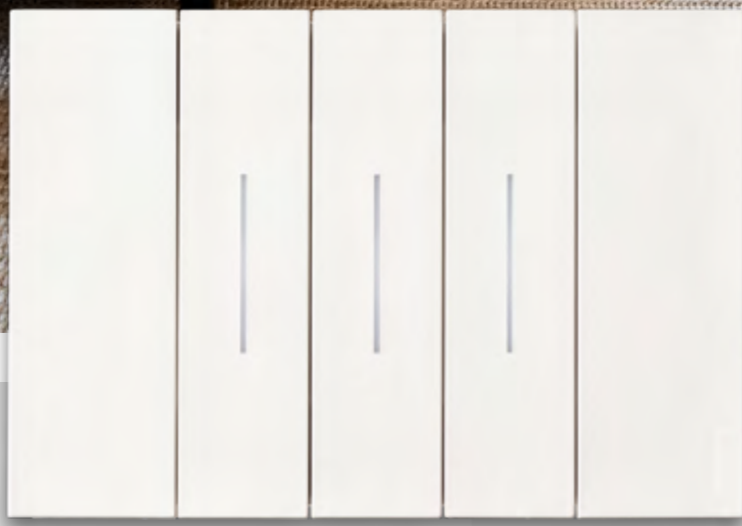


# DEVICE FINISHING



Living Now

6



**WHITE cover plate / 雅士白**  
Material: techno polymer  
Code: ...KW



**GOLD cover plate / 缎丝金**  
Material: zamak  
Code: ...ZW



**MOON cover plate / 冷月灰**  
Material: zamak  
Code: ...NW



**ICE cover plate / 冰白**  
Material: techno polymer  
Code: ...DW



**SKY cover plate / 雾天青**  
Material: techno polymer  
Code: ...DA



**PIXEL cover plate / 像素白**  
Material: techno polymer - pixel effect  
Code: ...MW

**Living Now cover plates code**

2 module	3 module	4 module	6 module
KA4802...	KA4803...	KA4804...	KA4806...

# Cover plate finishing

The zamak finishes are obtained using non-mass production procedures. The individual differences among the various cover plates are therefore a distinguishing valuable element.

DESIGN

7



**SAND cover plate / 沙灰色**  
Material: techno polymer  
Code: ...KM



**COPPER cover plate / 缎丝金**  
Material: zamak  
Code: ...ZM



**OAK cover plate / 橡木**  
Material: wood  
Code: ...LM



**AURA cover plate / 气质粉**  
Material: techno polymer  
Code: ...DM



**OPTIC cover plate / 光棱镜**  
Material: techno polymer - pixel effect  
Code: ...MM

**Living Now cover plates code**

2 module	3 module	4 module	6 module
KA4802...	KA4803...	KA4804...	KA4806...

# Cover plate finishing

The zamak finishes are obtained using non-mass production procedures. The individual differences among the various cover plates are therefore a distinguishing valuable element.



**BLACK cover plate / 石墨黑**  
Material: techno polymer  
Code: ...KG



**SPACE cover plate / 乌陨石**  
Material: zamak  
Code: ...NG



**STEEL cover plate / 缎丝银**  
Material: zamak  
Code: ...ZG



**WALNUT cover plate / 胡桃木**  
Material: wood  
Code: ...LG



**NIGHT cover plate / 亮黑**  
Material: techno polymer  
Code: ...DG

Living Now cover plates code

2 module	3 module	4 module	6 module
KA4802...	KA4803...	KA4804...	KA4806...

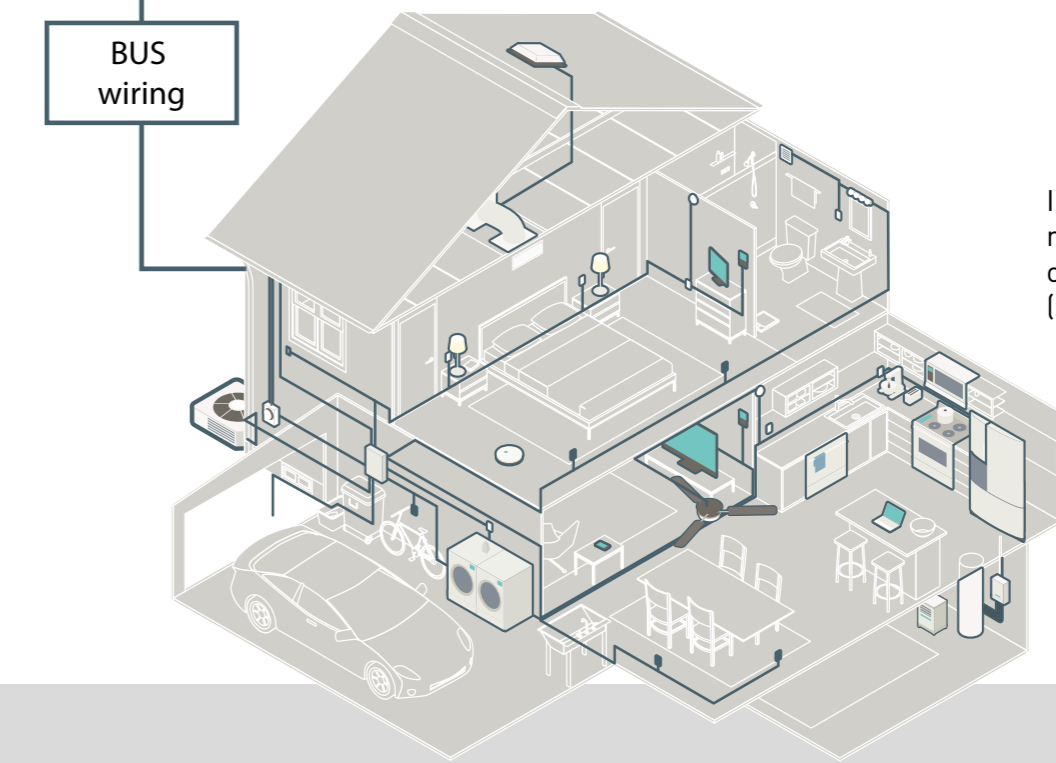
## Cover plate finishing

The zamak finishes are obtained using non-mass production procedures. The individual differences among the various cover plates are therefore a distinguishing valuable element.



### MyHOME\_Up system

- Lights
- Shutters
- Energy
- Temperature control
- Burglar alarm
- Sound system
- General control
- Scenario control
- Video door entry system
- Consumption display
- Energy Management
- Integration with other brand



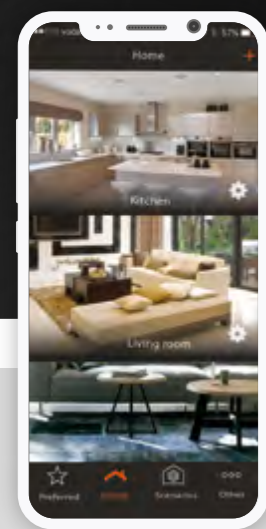
Install a bus integrated system manageable using one single App or one single touch screen display (specific system design solution).

### MYHOME\_UP SYSTEM



### SIMPLE TO USE

The possibility of choosing the favourite controls and create customised scenarios, make MyHOME\_Up the ideal solution for adapting the system to personal needs!



App MyHOME\_Up

# INSTALL A MyHOME\_Up SYSTEM USING THE LIVING NOW RANGE



Light and Full digital controls

BUS



Display thermostat



Touch Screen HOMETOUCH (compatible with Netatmo cameras)



MYHOMESERVER1

NUVO audio system

Third-party products and devices



## A complete system

The heart of the system is MYHOMESERVER1, a connected server that provides integration of all the system functions!

### EVERYTHING UNDER CONTROL

Thanks to MyHOME\_Up, end users can manage their homes in full freedom: using Living Now manual controls, Touch Screen devices and Smartphones with the MyHOME\_Up App.



BTicino S.p.A. reserves at any time the right to modify the contents of this booklet and to communicate, in any form and modality, the changes brought to the same.

**BTicino** SpA  
Viale Borri, 231  
21100 Varese - Italy  
[www.bticino.com](http://www.bticino.com)

**bticino**  
A brand of  **legrand**